

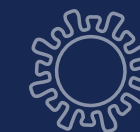
TESTING, ISOLATING AND QUARANTINE FOR PRESCHOOL AND EARLY CHILDHOOD SETTINGS



Government of South Australia
Department for Education



IF A CHILD OR STAFF MEMBER TESTS POSITIVE FOR COVID-19 THEY MUST NOTIFY THE SERVICE AND ISOLATE FOR 10 DAYS.



CONTACT DEFINITIONS AND REQUIREMENTS

Child



Children attending the site undertaking normal learning and care activities

CHILDREN ARE A CLASSROOM CONTACT IF:

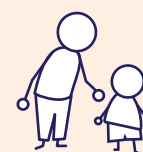
- a child who is in a group/room where the early childhood educator, teacher, worker or another child has tested positive for COVID-19

Parents will be informed there has been a positive case of COVID-19 by the individual service

CHILDREN ARE REQUIRED TO:

- if the child has symptoms, they must not attend the service and get tested as soon as possible
- children (aside from the positive case/s) will be encouraged to continue attending the service if they don't have any symptoms
- children should avoid attending extra-curricular activities for 7 days (such as, excursions, bush kindy etc).
- attendance at OSHC should be avoided where possible for 7 days

Early childhood worker, educator or teacher



People working in early childhood settings

YOU ARE A CLASSROOM CONTACT IF:

- you worked in a room where a child or other early childhood worker has tested positive for COVID-19

YOU ARE REQUIRED TO:

- 7 days rapid antigen 'test to stay' and attend work if you receive a negative result
- stay at home if you have any symptoms

YOU ARE A WORKPLACE CLOSE CONTACT IF:

- you spend more than 15 minutes indoors, in close proximity and not wearing a mask with another adult who has tested positive for COVID-19

REQUIREMENTS

- 7 days quarantine (as per standard community requirement)

Ancillary staff



Administrative staff with limited student/child contact, chefs etc.

YOU ARE A CLASSROOM CONTACT IF:

- you worked in a room where a child or other early childhood worker has tested positive for COVID-19

YOU ARE REQUIRED TO:

- 7 days rapid antigen 'test to stay' and attend work if you receive a negative result
- stay at home if you have any symptoms

YOU ARE A WORKPLACE CLOSE CONTACT IF:

- you spend more than 15 minutes indoors, in close proximity and not wearing a mask with another adult who has tested positive for COVID-19

REQUIREMENTS

- 7 days quarantine (as per standard community requirement)

RAPID ANTIGEN TESTING

Rapid antigen testing surveillance for all preschool and early childhood education and care staff is strongly recommended, however it is opt in. Surveillance testing must be done every Monday, Wednesday and Friday. A positive result must be reported to SA Health (within 24 hours) via their website and to your leader.

HOUSEHOLD CONTACT REQUIREMENTS

If a staff member or child tests positive to COVID-19, all people who live in that household must quarantine for 7 days (or 14 days if the household cannot separate).

CLASSROOM CONTACT ADVICE

The Chief Public health Officer advises it's good practice for classroom contacts to do the following for 14 days to minimise risk to others, when outside of the preschool or early childhood education and care setting:

- avoiding high risk settings or COVID Management Plan events
- wearing a surgical mask around others (where age appropriate) and outside your home

- avoid working across worksites unless an approved risk management plan is in place (eg rapid antigen testing)
- avoiding contact with vulnerable people outside of your workplace or family, where possible
- avoiding non-essential activities where possible (eg where there are lots people, inside, in close contact)
- avoiding shared spaces and maintain physical distance.

